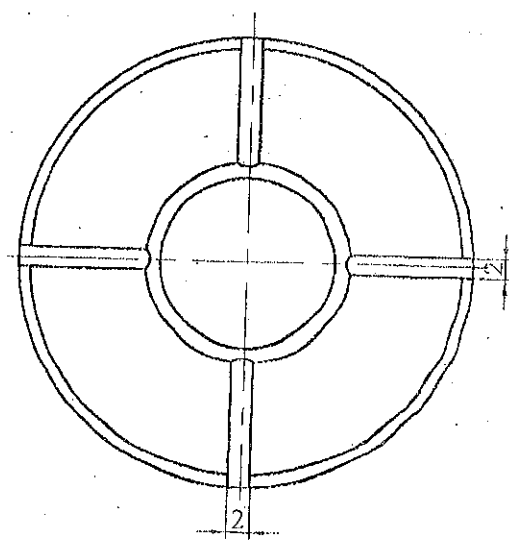
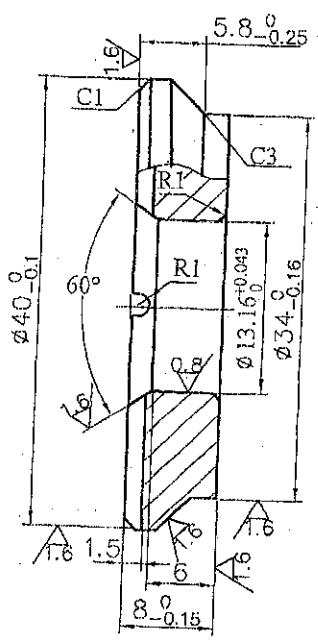


(b)

Indel. 55

cc
F

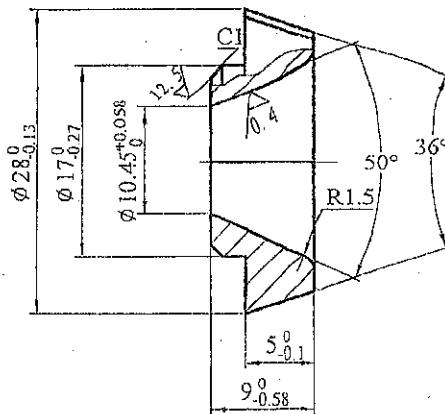
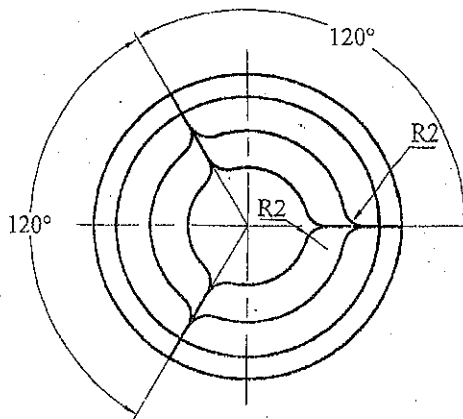
UOS 12.5
▽



- 1. Hardness: 48 - 52HRC.
- 2. Hole $\text{Ø}13.16^{+0.043}_0$ shall be chrome-plated.

				1st drawing guide die	B101K/G20		
					Symbol of dwg	Weight	Scale
				T10A			2:1
					sheet of		

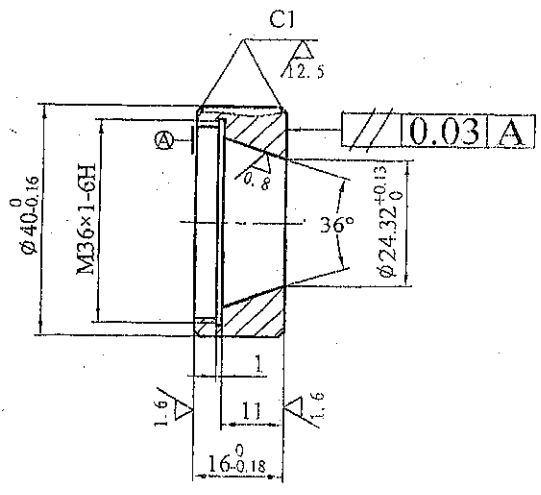
UOS ∇ 1.6



Hardness:58 ~ 62HRC.

					B101K/G40.1				
Mark	Places	Doc.No.	Signature	Date	Clip		Symbol of dwg	Weight	Scale
Designed by									2:1
Chked by									
Proc-chked by									
Std-chked by									
Approbated by					T10A		sheet of		sheets
Approved by									

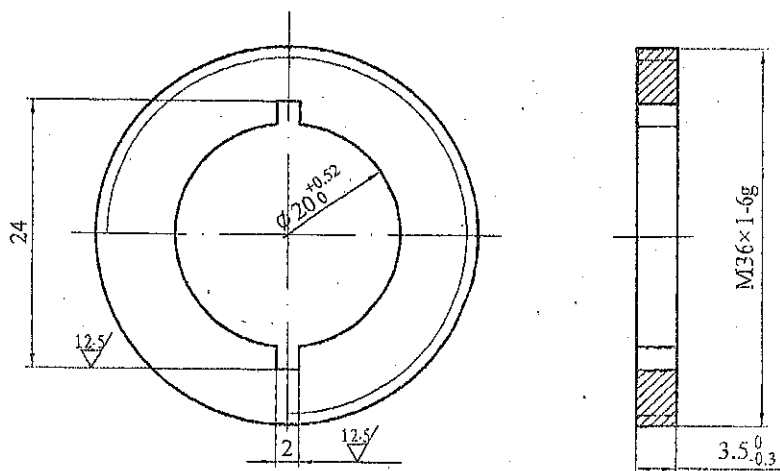
UOS $\sqrt{3.2}$



Hardness: 56 ~ 60HRC.

						B101KG40.2		
Mark	Places	Doc.No.	Signature	Date	Box	Symbol of dwg	Weight	Scale
								1:1
					T10A	sheet of	sheets	

UOS $\nabla^{3.2}$



						B101KG40.5		
Mark	Places	Doc.No.	Signature	Date	Helicoid	Symbol of dwg	Weight	Scale
								2:1
					T10A	sheet of	sheets	